

Cash Crop Conference 2022 - Poland

June 5th - 11th Novotel Centrum, Poznan

Scientific committee

Dr. Yelto Zimmer, agri benchmark Germany, Braunschweig
yelto.zimmer@agribenchmark.net
 Dr. Thomas de Witte, Thünen Institute, Germany, Braunschweig
 Dr. Pawel Boczar, University Poznan, Poland, Poznan

Event organization

Maksym Kryvonis,
MK@InConventus.com
 InConventus Group Sp. z o.o.;
 21 Kamienna str.;31-403 Krakow, Poland

Sun, June 5th

Arrival day

14:00 - 16:00 **Pre-Conference Meetings - Onboarding Event for new members (TBC)**
 16:00 - 18:00 **Training Session**
 19:00 **Welcome Reception**

Mon, June 6th

Poland Day

09:00 - 09:15 **Welcome and Opening**
 09:15 - 10:00 **Polish agriculture - How does it look like?**
 10:00 - 10:30 Coffee/Tea break
 10:30 - 11:15 **Polish Smallholder Production - History and Current Profile**
 11:15 - 12:15 **Key Features of Polish Crop Production**
 12:15 - 13:00 Lunch break

13:00 - 19:00 **Excursion: Farm visit in the Poznan region**
 Family farm - 400 ha in the Greater Poland Voivodeship, Wrzesnia Commune.
 The farm is characterized by average production conditions, soil medium and poor
 The farm grows: winter rapeseeds, sugar beet, winter wheat, winter barley, winter triticale, summer barley and corn.
 The farm also produces livestock - 1000 sows



Tue, June 7th

Global Crop Production - Status & Prospects

09:00 - 10:15 **Global Crop & Input Markets - Bullish is the New Normal?**
 Snapshots on Crop Price Spreads within Europe

10:15 - 11:15 **Economic Success of Crop Farms in 2021 - Outlook for 2022**
 How did typical farms perform in 2021

11:15 - 11:45 Coffee break

11:45 - 13:00 **Workshops**

Skyrocketing Input Prices - How to Adjust?	Bullish Crop Markets - Impact on Developing Countries?
---	---

13:00 - 14:00 Lunch break

14:00 - 15:30 **Workshops**

1. **Production Systems and Economics in Global Rapeseed**
2. **Production Systems and Economics in Global Soybeans**
3. **Production Systems and Economics in Global Sugar**

15:30 - 16:00 Coffee/Tea break

16:00 - 17:00 **War in Ukraine - Implications for Producers and Crop Production?**

17:00 - 18:00 **Country Snap Shots from Ruanda and Kazakhstan**

Cash Crop Conference 2022 - Poland

June 5th - 11th Novotel Centrum, Poznan

Scientific committee		Event organization	
Wed, June 8th		Greenhouse Gas Mitigation in Crop Production & Innovations	
09:00 - 09:45	GHG Mitigation in Crop Production - Recent Policy Developments		
09:45 - 10:30	Carbon Farming - How Solid is the Scientific Basis?		
10:30 - 11:15	GHG Mitigation Strategies in Crop Production - Case Study Results from Brazil, USA and Germany -		
11:15 - 11:45	Coffee/Tea break		
11:45 - 12:45	<u>Break-out Sessions</u>		
	Carbon Farming Programs in Developed Countries		Climate Smart Crop Production in Development Aid
12:45 - 13:45	Lunch break		
13:45 - 14:30	Economics of Spot Spraying Technology		
14:30 - 15:15	Precision Cropping Technologies - How Relevant are they Globally?		
15:15 - 15:45	Coffee/Tea break		
15:45 - 16:45	<u>Break-out Sessions</u>		
	Managing Agronomic and Legal Challenges in Crop Production Systems		Digital Ag Services for Producers in Africa and Asia
16:45 - 18:00	Economics of Crop Rotations		Sugar Session
Thu, June 9th		Policy Interventions & Crop Production	
08:30 - 09:30	Policy Reforms in the EU, USA and Canada - Implications for Crop Producers		
09:30 - 11:00	<u>Break-out Sessions</u>		
	CAP Reform - Implications for EU Crop Producers		Economics of Reduced Crop Protection
			Economics Organic vs. Conventional
11:00 - 11:30	Coffee/Tea break		
11:30 - 12:00	Review CCC2022 and Outlook 2023		

Cash Crop Conference 2022 - Poland

June 5th - 11th Novotel Centrum, Poznan

Scientific committee

Event organization

POST CONFERENCE TOUR

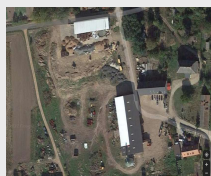
Thursday, June 9th

Poznan Novotel 12:30 departure from Hotel
Cieszyny 15:00 **Farm visit**

Family farm (500ha) managed by two brothers

Location: the northern part of the province Lower Silesia, Jemielno commune.

The farm is characterized by relatively small fields, with high soil variability and a lot of stones in the fields. It has a potato and grain warehouse. The farm grows: potatoes, winter rapeseeds, sugar beet, winter wheat, winter barley, and corn.



Wrocław 19:30 Hotel Śląsk Wrocław

Friday, June 10th

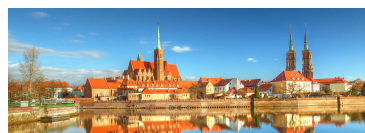
Wrocław 08:00 departure from Hotel
Głubczyce 10:30 **Farm Visit**

TOP FARMS GŁUBCZYCE (TFG), 10.000ha - located in the Southern part of Opolskie Province, spanning Głubczyce, Branice, Kietrz, Baborów, and Pawłowiczki districts and has one of the best arable lands in Poland. Arable production: cereals, rape, potatoes, beets, and the production of milk. Each year, TFG has about 44 thousand. tons of cereals, 6 thousand. tons of rape, 50 thousand. tonnes of sugar beet and 44 thousand. tons of potatoes. The company is one of the largest milk producers in the country. It has a herd of approximately 1,600 dairy cows, producing over 17.5 million liters of milk annually.



Wrocław 17:00 Hotel Śląsk Wrocław

18:00 **City Tour Wrocław**



The most beautiful monuments and attractions of Wrocław in a nutshell. A walk around Wrocław's Old Town; Market Square, University of Wrocław, Ostrów Tumski and Promenada Staromiejska.

Saturday, June 11th

Wrocław 08:00 departure from Hotel
Namysłów 09:30 **Farm visit**

1.300 ha farm (limited liability company)

Location - the northern part of the Opole region, the commune of Namysłów.

The farm is characterized by average production conditions, with high soil variability. It has grain warehouses. The farm grows: winter rapeseeds, winter wheat, winter triticale, spring barley, corn, sunflower



Poznan Novotel 17:30 Hotel